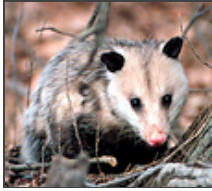


Edit Image Data



<http://tolweb.org/tree/ToLimages/possums.jpg>

ToL Image ID# 4651

Contributed by on (server time) [edit](#)

Image data last edited by Katja Schulz on 2005-04-26 12:31:14.0 (server time)

[View/upload/delete versions of this image](#)



The information provided in this form will be stored with your image in the ToL database. It will be used to generate image captions, and people can search the ToL for images meeting certain criteria. Click on the lightbulbs to get more information about each section of this form.



Tips for filling out this form

Copyright Information



- I own the copyright for this image
- The copyright for this image belongs to another **ToL Contributor**, and this contributor has authorized me to submit it to the ToL database.

Katja Schulz [Select a Contributor](#)

- The copyright for this image belongs to another person who is not a registered ToL Contributor, and the copyright owner has authorized me to submit it to the ToL database.

Copyright Owner

Email

Homepage Url

Copyright Date

Materials in the public domain may be freely reproduced, distributed, modified, built upon, or otherwise exploited by anyone for any purpose, commercial or non-commercial, and in any way.

- The image is in the public domain

[Submit Image Data](#)

Save Your Data!

In order to save the data entered in this form to the ToL database, you need to click on the **Submit Image Data** button. You will then be given an overview of the data you entered, and you can save those data or return to this form if you discover any errors or omissions.

Don't close this window without saving your data first. Also, your connection to the ToL database will time out in about an hour of inactivity. If it takes you longer to finish your contribution, you should save an incomplete version along the way to keep your connection active.

Use Permitted by Copyright Owner



Click on the items in the list below to get more information about each option.

1. Restricted to one-time use in specified location. Do not modify.
2. Tree of Life use only.
3. Use on ToL and share with other scientific/educational projects.
4. Release to the public under the Attribution-NonCommercial 2.0 Creative Commons License
- Remember this option for my future media contributions

Other Credits

(Reference, Creator, Acknowledgements)



Image Data Sections

[Copyright Information](#)

[Use Permitted by Copyright Owner](#)

[Other Credits](#)

[Attached to Group\(s\)](#)

[Image Content](#)

[Place & Time](#)

[Specimen Information](#)

[Comments](#)

[Alternative Text](#)

[Image Type/Technical Information](#)

[Editing Privileges](#)

[Notes](#)

[Submit Image Data](#)

Attached to Group(s)



Didelphimorphia

[Remove](#)

[Add a Group from the ToL Database](#)

Image Content



- Specimen(s) (one or several organisms)
- Body Parts (parts of an organism's morphology or anatomy)
- Ultrastructure (cells and parts of cells)
- Habitat
- Equipment/Apparatus
- People

Subject/Keywords

Place & Time



For images of specimens, provide information about where and when the organism was collected. If the organism is not native to the location where it was found, you can also provide information about its origin.

Location

Date/Time

Specimen Information



- Live Specimen
- Dead Specimen
- Model
- Fossil
- Other

Scientific Name

Identified By

Behavior

Sex

- Male
- Female
- Other

Life Cycle Stage

Body Part

View

Size

Specimen Documentation

(Collection, Voucher & Type Information)



Comments

Virginia opossum



Alternative Text

Virginia opossum sitting on forest floor, facing camera



Image Type

Photograph artistic interpretation



Technical Information

Editing Privileges

People who can edit this form:

Copyright Owner: **Katja Schulz**

Contributor:

ToL Editor/Project Administrator

[Allow another ToL contributor to edit this form](#)



Notes



Submit Image Data